

# Utah State House District 16

Rep. Steve Handy (R)



## A Demographic Profile

Table 1 and Figure 1 show the composition of House District 16 population among age and gender groups. Table 2 and Figure 2 show the composition of population among racial groups. These demographic statistics are based on the 2010 Census and 2013 House Districts. The corresponding statistics for the State of Utah are shown for comparison. The total district population was 36,768 persons, with a median age of 29.3 overall, 29.9 for females and 28.8 for males (statewide, median ages are 29.2 overall, 29.7 for females, and 28.7 for males).

**Table 1: House District 16 Population by Age Group and Gender**

Age	District Count			District Share			State Share		
	total	male	female	total	male	female	total	male	female
0 – 4	3,334	1,707	1,627	9.1%	4.6%	4.4%	9.5%	4.9%	4.6%
5 – 9	3,045	1,573	1,472	8.3%	4.3%	4.0%	9.0%	4.6%	4.4%
10 – 14	2,867	1,450	1,417	7.8%	3.9%	3.9%	8.2%	4.2%	4.0%
15 – 19	3,140	1,593	1,547	8.5%	4.3%	4.2%	8.0%	4.0%	4.0%
20 – 24	3,287	1,687	1,600	8.9%	4.6%	4.4%	8.2%	4.1%	4.1%
25 – 29	3,124	1,678	1,446	8.5%	4.6%	3.9%	8.3%	4.3%	4.0%
30 – 34	2,707	1,384	1,323	7.4%	3.8%	3.6%	7.8%	4.0%	3.8%
35 – 39	2,222	1,094	1,128	6.0%	3.0%	3.1%	6.5%	3.3%	3.2%
40 – 44	2,232	1,081	1,151	6.1%	2.9%	3.1%	5.6%	2.8%	2.7%
45 – 49	2,356	1,176	1,180	6.4%	3.2%	3.2%	5.6%	2.8%	2.8%
50 – 54	2,388	1,176	1,212	6.5%	3.2%	3.3%	5.5%	2.7%	2.8%
55 – 59	1,954	990	964	5.3%	2.7%	2.6%	4.8%	2.4%	2.4%
60 – 64	1,478	772	706	4.0%	2.1%	1.9%	3.9%	1.9%	2.0%
65 – 69	933	455	478	2.5%	1.2%	1.3%	2.9%	1.4%	1.5%
70 – 74	640	314	326	1.7%	0.9%	0.9%	2.1%	1.0%	1.1%
75 – 79	479	216	263	1.3%	0.6%	0.7%	1.7%	0.8%	0.9%
80 – 84	304	130	174	0.8%	0.4%	0.5%	1.2%	0.5%	0.7%
85+	278	109	169	0.8%	0.3%	0.5%	1.1%	0.4%	0.7%
Under 5	3,334	1,707	1,627	9.1%	4.6%	4.4%	9.5%	4.9%	4.6%
School Age	7,776	3,969	3,807	21.1%	10.8%	10.4%	22.0%	11.3%	10.7%
College Age	4,563	2,334	2,229	12.4%	6.3%	6.1%	11.5%	5.7%	5.8%
Working Age	23,024	11,685	11,339	62.6%	31.8%	30.8%	59.5%	30.0%	29.5%
65+	2,634	1,224	1,410	7.2%	3.3%	3.8%	9.0%	4.1%	4.9%

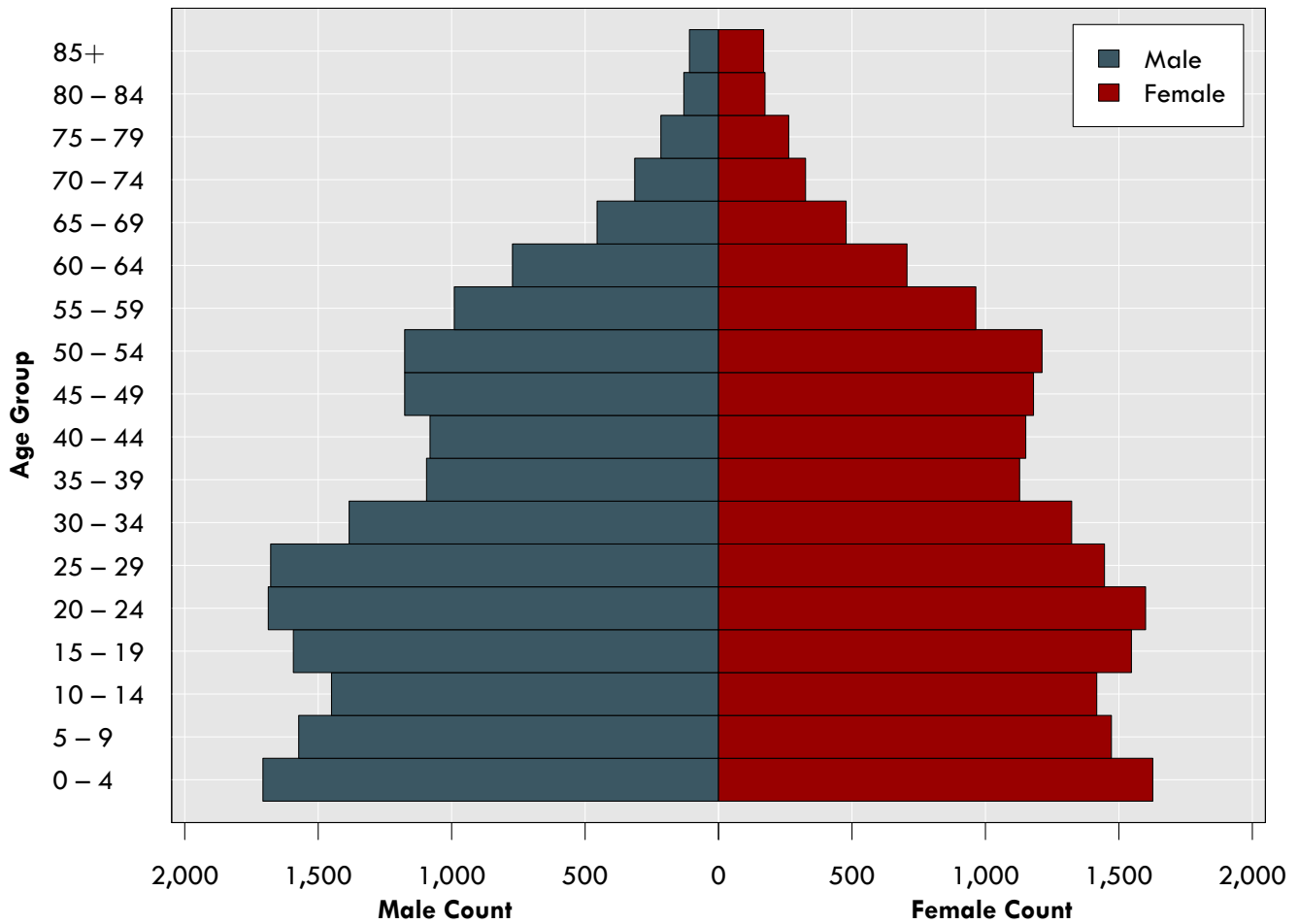
Source: UCDP aggregation of block-level data from the Census 2010 SF1 to the seventy-five 2013 Utah House districts.

**Table 2: House District 16 Racial Composition**

Race/Ethnicity	District		State
	total	share	share
White non-Hispanic	29,608	80.5%	80.4%
Hispanic	4,274	11.6%	13.0%
Asian non-Hispanic	888	2.4%	2.0%
Multi-Race non-Hispanic	887	2.4%	1.8%
American Indian & Alaska Native non-Hispanic	162	0.4%	1.0%
Black non-Hispanic	724	2.0%	0.9%
Native Hawaiian & Other Pacific Islander non-Hispanic	189	0.5%	0.9%
Other non-Hispanic	36	0.1%	0.1%

Source: UCDP aggregation of block-level data from the Census 2010 SF1 to the seventy-five 2013 Utah House districts.

**Figure 1: House District 16 Population Pyramid**



**Figure 2: House District 16 Population Composition by Race**

