

Utah State Senate District 25

Sen. Lyle W. Hillyard (R)



A Demographic Profile

Table 1 and Figure 1 show the composition of Senate District 25 population among age and gender groups. Table 2 and Figure 2 show the composition of population among racial groups. These demographic statistics are based on the 2010 Census and 2013 Senate Districts. The corresponding statistics for the State of Utah are shown for comparison. The total district population was 95,255 persons, with a median age of 25.5 overall, 25.2 for females and 25.8 for males (statewide, median ages are 29.2 overall, 29.7 for females, and 28.7 for males).

Table 1: Senate District 25 Population by Age Group and Gender

Age	District Count			District Share			State Share		
	total	male	female	total	male	female	total	male	female
0 – 4	9,594	4,805	4,789	10.1%	5.0%	5.0%	9.5%	4.9%	4.6%
5 – 9	7,985	4,049	3,936	8.4%	4.3%	4.1%	9.0%	4.6%	4.4%
10 – 14	7,055	3,608	3,447	7.4%	3.8%	3.6%	8.2%	4.2%	4.0%
15 – 19	8,714	3,944	4,770	9.1%	4.1%	5.0%	8.0%	4.0%	4.0%
20 – 24	13,269	6,422	6,847	13.9%	6.7%	7.2%	8.2%	4.1%	4.1%
25 – 29	9,417	5,179	4,238	9.9%	5.4%	4.4%	8.3%	4.3%	4.0%
30 – 34	6,844	3,541	3,303	7.2%	3.7%	3.5%	7.8%	4.0%	3.8%
35 – 39	4,954	2,490	2,464	5.2%	2.6%	2.6%	6.5%	3.3%	3.2%
40 – 44	4,215	2,152	2,063	4.4%	2.3%	2.2%	5.6%	2.8%	2.7%
45 – 49	4,295	2,100	2,195	4.5%	2.2%	2.3%	5.6%	2.8%	2.8%
50 – 54	4,406	2,140	2,266	4.6%	2.2%	2.4%	5.5%	2.7%	2.8%
55 – 59	3,892	1,950	1,942	4.1%	2.0%	2.0%	4.8%	2.4%	2.4%
60 – 64	2,910	1,425	1,485	3.1%	1.5%	1.6%	3.9%	1.9%	2.0%
65 – 69	2,248	1,058	1,190	2.4%	1.1%	1.2%	2.9%	1.4%	1.5%
70 – 74	1,791	900	891	1.9%	0.9%	0.9%	2.1%	1.0%	1.1%
75 – 79	1,413	672	741	1.5%	0.7%	0.8%	1.7%	0.8%	0.9%
80 – 84	1,127	483	644	1.2%	0.5%	0.7%	1.2%	0.5%	0.7%
85+	1,126	394	732	1.2%	0.4%	0.8%	1.1%	0.4%	0.7%
Under 5	9,594	4,805	4,789	10.1%	5.0%	5.0%	9.5%	4.9%	4.6%
School Age	19,001	9,686	9,315	19.9%	10.2%	9.8%	22.0%	11.3%	10.7%
College Age	18,022	8,337	9,685	18.9%	8.8%	10.2%	11.5%	5.7%	5.8%
Working Age	58,955	29,314	29,641	61.9%	30.8%	31.1%	59.5%	30.0%	29.5%
65+	7,705	3,507	4,198	8.1%	3.7%	4.4%	9.0%	4.1%	4.9%

Source: UCDP aggregation of block-level data from the Census 2010 SF1 to the twenty-nine 2013 Utah Senate districts.

Table 2: Senate District 25 Racial Composition

Race/Ethnicity	District		State
	total	share	share
White non-Hispanic	81,289	85.3%	80.4%
Hispanic	9,249	9.7%	13.0%
Asian non-Hispanic	2,022	2.1%	2.0%
Multi-Race non-Hispanic	1,228	1.3%	1.8%
American Indian & Alaska Native non-Hispanic	475	0.5%	1.0%
Black non-Hispanic	559	0.6%	0.9%
Native Hawaiian & Other Pacific Islander non-Hispanic	333	0.3%	0.9%
Other non-Hispanic	100	0.1%	0.1%

Source: UCDP aggregation of block-level data from the Census 2010 SF1 to the twenty-nine 2013 Utah Senate districts.

Figure 1: Senate District 25 Population Pyramid

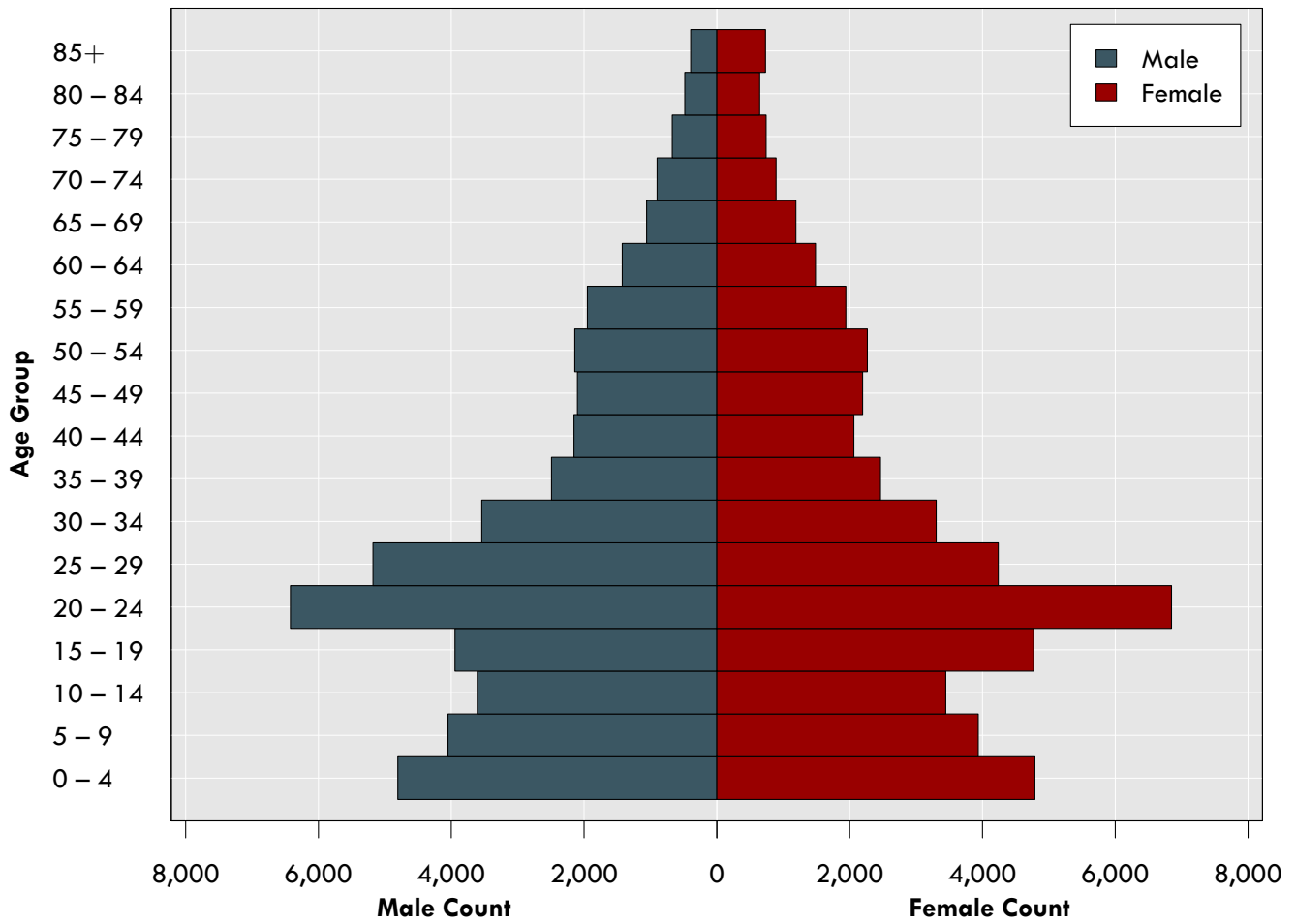


Figure 2: Senate District 25 Population Composition by Race

